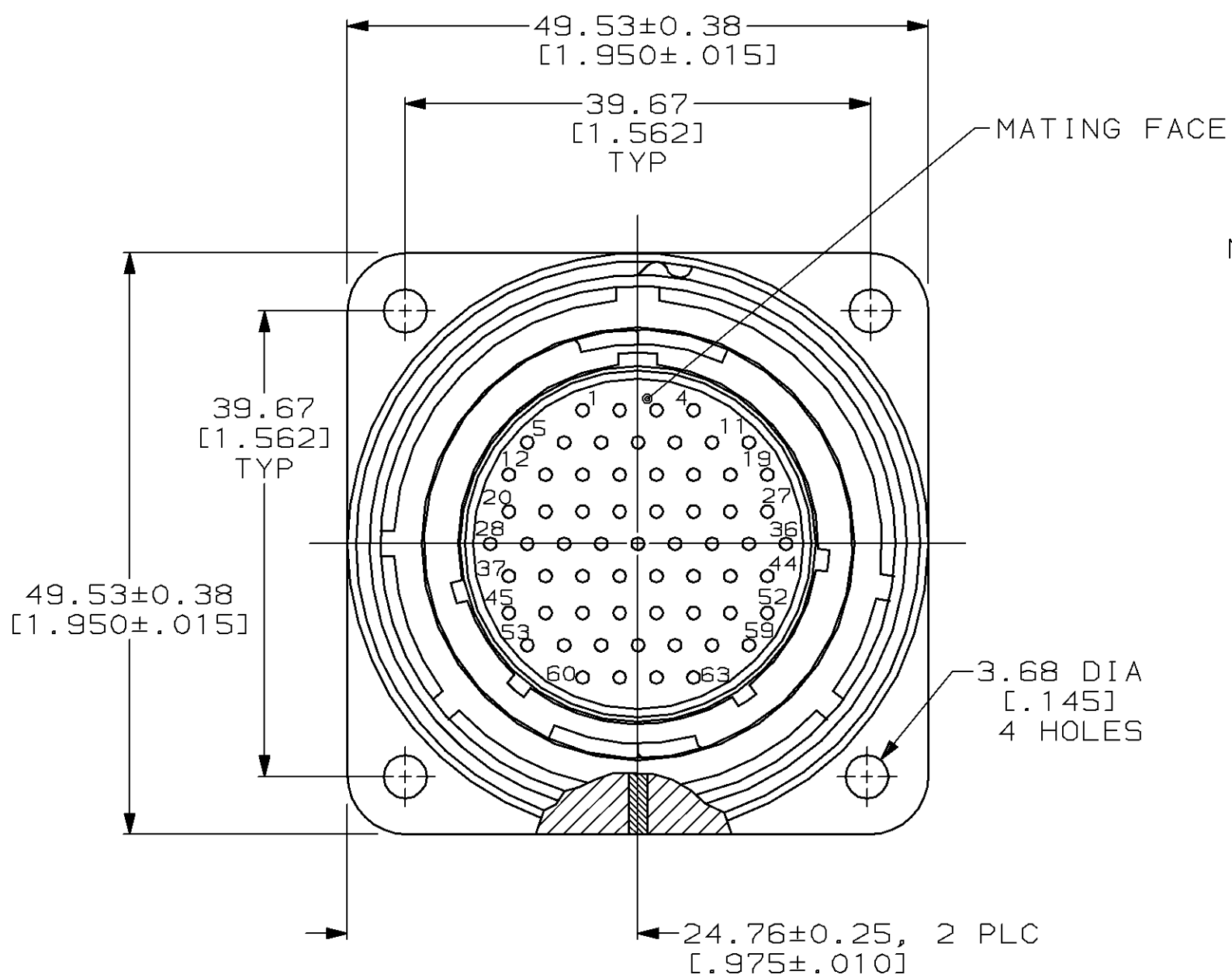


LOC	DIST	P	F	ZONE	LTR	DESCRIPTION	DATE	APPD
BD	35				G	REDRAWN W/O CHANGE PER EC 0020-774-94	09/04/94	AF
					H	OBS -2 PER EC 0020-0136-95	17 JUL 95	AF



RECEPTACLE, STD SEX
 ARRANGEMENT 23-63
 MATERIAL: THERMOPLASTIC
 COLOR: BLACK

METAL SHELL RECEPTACLE
 MATERIAL: ZINC ALLOY
 FINISH: NICKEL PLATED
 PER QQ-N-290

GROOVED PIN, 2 PLC
 MATERIAL: STEEL ALLOY
 FINISH: NICKEL PLATED
 PER QQ-N-290

PERIPHERAL SEAL
 SEE TABLE

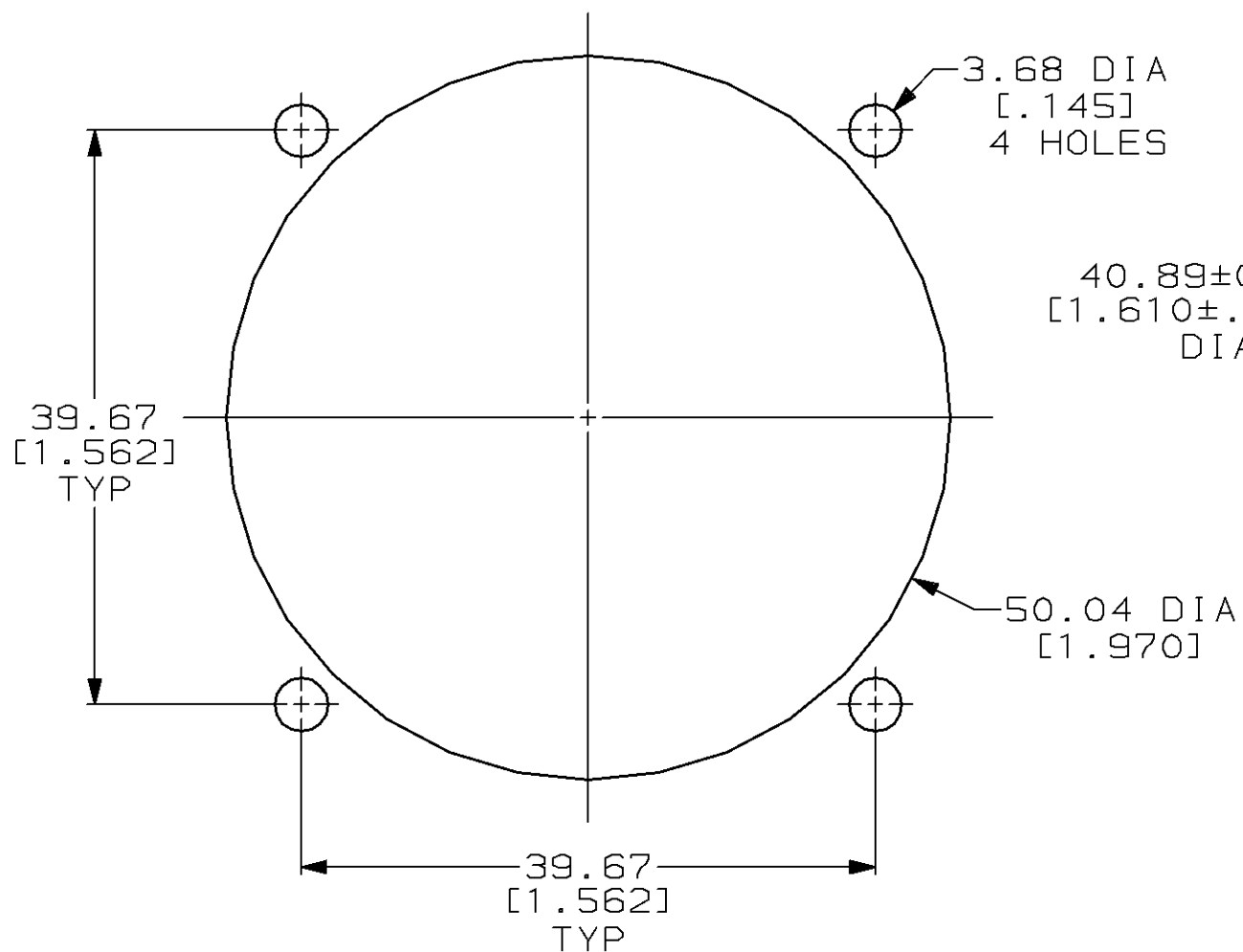
48.26 MAX [1.900]

3.18 MAX [.125] PANEL THK

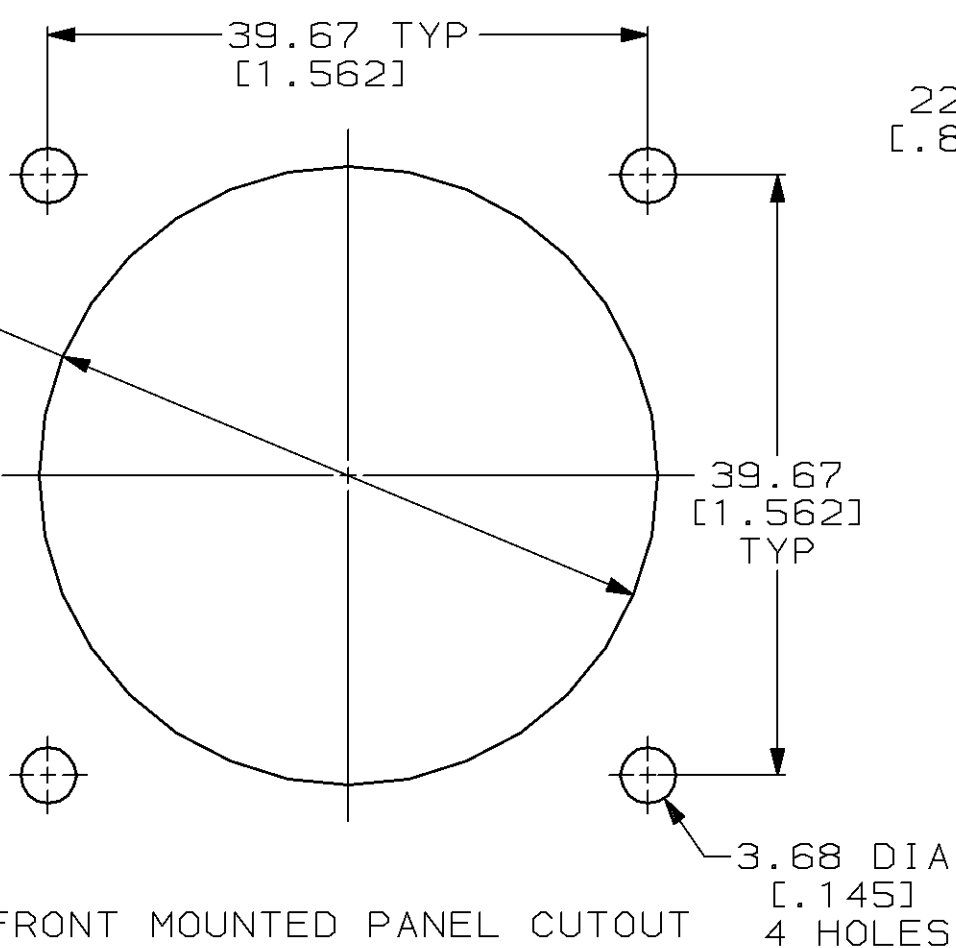
3.18±0.25 [.125±.010]

22.22±0.25 [.875±.010]

31.22 MAX [1.229]



REAR MOUNTED PANEL CUTOUT



FRONT MOUNTED PANEL CUTOUT

OBSOLETE	YES	208477-2
	NO	208477-1
PERIPHERAL SEAL	PART NUMBER	

- RECEPTACLE MATES WITH AMP PLUG 208476-1.
- AMP PART NUMBER AND DATE CODE TO BE LOCATED ON EDGE OF FLANGE.

DO NOT SCALE PRINT. UNLESS SPECIFIED DIMENSIONS IN mm [INCHES] TOLERANCES ON :	DR 09-04-94 D.HARDY	AMP AMP Incorporated Harrisburg, PA 17105-3608
2 PLC DEC ±0.13 [.005]	CHK 09-07-94 R.STONE	
3 PLC DEC ± -	APPD 09-30-94 A.FRANTUM	NAME
ANGLES ± -	APPD 09-30-94 A.FRANTUM	RECEPTACLE ASSEMBLY, 28-63, STANDARD SEX, CMC
MATERIAL	PRODUCT SPEC	SIZE
SEE CALL OUT	APPLICATION SPEC	CAGE CODE
FINISH	WEIGHT -	DRAWING NO
SEE CALL OUT		00779
		C=208477
		SCALE 2:1
		SHEET 1 OF 1

THIS DRAWING IS A CONTROLLED DOCUMENT FOR AMP INCORPORATED. IT IS SUBJECT TO CHANGE AND THE CONTROLLING ENGINEERING ORGANIZATION SHOULD BE CONTACTED FOR THE LATEST REVISION.